



7400 West 129th Street, Suite 100 | Overland Park, KS 66213 | www.69express.org | info@69express.org

IMMEDIATE RELEASE

August 21, 2024

For more information:

Delaney Tholen

785-817-9365

delaney.tholen@ks.gov

119th Street at U.S. 69 will close Friday for 60 days in Overland Park

Ramps at the 119th Street and U.S. 69 interchange will be fully closed to traffic for approximately 60 days beginning at 7 p.m. Friday, Aug. 23, in Johnson County.

Eastbound and westbound 119th Street will be closed from Grant Street to Farley/Three Lakes Parkway. Grant Street access to 119th Street also will be fully closed at the intersection of Grant Street/119th Terrace throughout the 60-day closure.

All ramps and 119th Street lanes are scheduled to reopen by the end of October. These closures are necessary for safe and expedited reconstruction of the 119th Street/U.S. 69 interchange as part of the 69Express project.

During the closure, U.S. 69 Highway traffic wishing to access 119th Street will be directed to detour as follows:

Southbound U.S. 69 to eastbound 119th Street:

- Exit southbound U.S. 69 at 135th Street and turn right
- Take 135th Street west to Antioch Rd. and turn right
- Take Antioch Rd. north to 119th Street and turn right
- Proceed east on 119th Street

Southbound U.S. 69 to westbound 119th Street:

- Exit southbound U.S. 69 at 135th Street and turn right
- Take 135th Street west to Quivira Rd and turn right
- Take Quivira Rd. north to 119th Street and turn left
- Proceed west on 119th Street



7400 West 129th Street, Suite 100 | Overland Park, KS 66213 | www.69express.org | info@69express.org

Northbound U.S. 69 to eastbound 119th Street:

- Exit northbound U.S. 69 at College Blvd. and turn right
- Take College Blvd. east to Antioch Rd. and turn right
- Take Antioch Rd. south to 119th street and turn left
- Proceed east on 119th Street

Northbound U.S. 69 to westbound 119th Street:

- Exit northbound U.S. 69 at College Blvd. and turn left
- Take College Blvd. west to Quivira Rd. and turn left
- Take Quivira Rd. south to 119th Street and turn right
- Proceed west on 119th Street

During the closure, 119th Street traffic wishing to access U.S. 69 Highway will be directed to detour as follows:

Eastbound 119th Street to southbound U.S. 69:

- Head east on 119th Street to Quivira Rd.
- Turn right on Quivira Rd.
- Head south on Quivira Rd. to 135th Street
- Turn left at 135th Street and head east
- Turn right onto the 135th Street to southbound U.S. 69 on-ramp

Westbound 119th Street to southbound U.S. 69:

- Head west on 119th Street to Antioch Rd.
- Turn left on Antioch Rd.
- Head south on Antioch Rd. to 135th Street
- Turn left at 135th Street
- Turn right onto the 135th Street to southbound U.S. 69 on-ramp

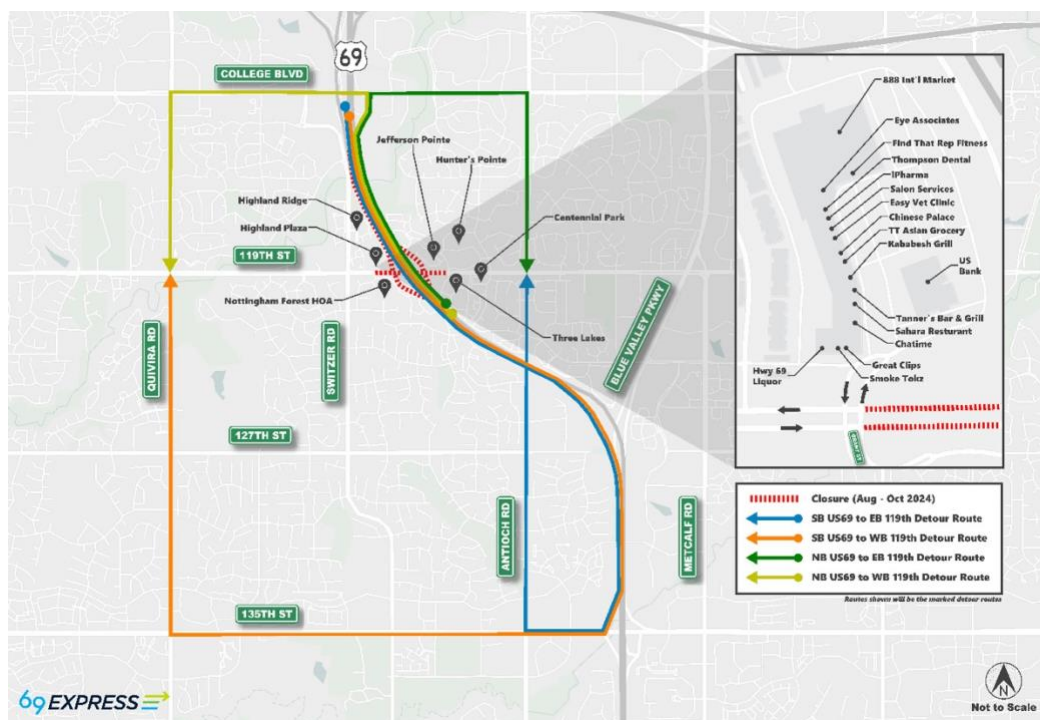
Eastbound 119th Street to northbound U.S. 69:

- Head east on 119th Street to Quivira Rd.
- Turn left on Quivira Rd.
- Head north on Quivira Rd. to College Blvd.
- Turn right on College Blvd and head east
- Turn right onto the College to northbound U.S. 69 on-ramp

Westbound 119th Street to northbound U.S. 69:

- Head west on 119th Street to Antioch Rd.
- Turn right onto Antioch Rd.
- Head north on Antioch Rd. to College Blvd.
- Turn left at College Blvd. and head west
- Merge onto the College Blvd. to northbound U.S. 69 on-ramp

Map below shows closure location marked in red and U.S. 69/119th Street detour routes marked in blue, orange, green and yellow.



During the closure, 119th Street traffic wishing to continue on 119th Street will be directed to detour as follows:

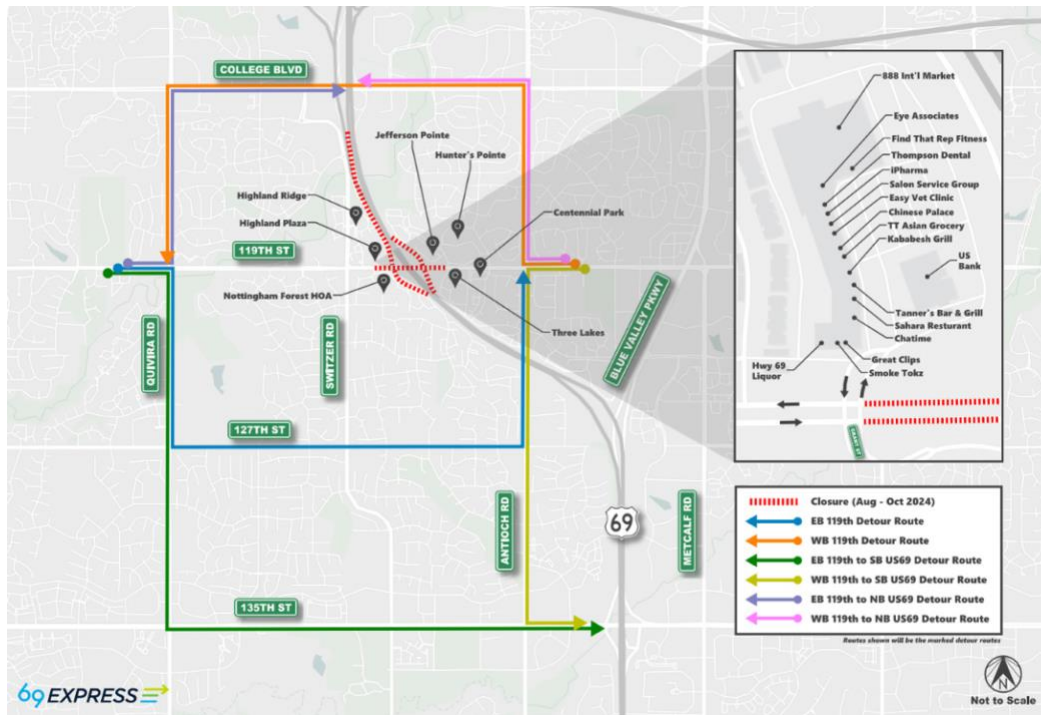
Eastbound 119th Street through traffic:

- Head east on 119th Street to Quivira Rd.
- Turn right on Quivira Rd.
- Head south on Quivira Rd. to 127th Street and turn left
- Take 127th Street to Antioch Rd. and turn left
- Take Antioch Rd. north to 119th Street and turn right
- Continue east on 119th Street

Westbound 119th Street through traffic:

- Head west on 119th Street to Antioch Rd.
- Turn right on Antioch Rd.
- Take Antioch Rd. north to College Blvd. and turn left
- Take College Blvd. west to Quivira Rd. and turn left
- Take Quivira south to 119th Street and turn right
- Continue west on 119th Street

Map below shows closure location marked in red and 119th Street through traffic detour routes marked in blue, orange, green, yellow, purple and pink.



The Highland Plaza shopping center will remain open and accessible from the west during the 119th Street closure period. The inset map in the large map above shows where drivers can access the retail area's entrance. Highland Plaza merchant locations also are depicted on the inset map.

More information on the 119th Street closures can be found on the [project website](#).

All work is weather dependent and subject to change. These temporary closures are part of the Kansas Department of Transportation's U.S. 69 Expansion Project (69Express).



7400 West 129th Street, Suite 100 | Overland Park, KS 66213 | www.69express.org | info@69express.org

The 69Express project includes reconstruction of U.S. 69, widening the highway with added express lanes — one in each direction between 151st and 103rd Streets — and interchange improvements at U.S. 69/167th Street in Overland Park.

All current 69Express construction and closure information is available on the project website, www.69express.org. For additional information, members of the public can get regular construction updates on the project [Facebook](#) and [X](#) (formerly Twitter) pages and by [subscribing to the project newsletter](#) and [signing up for text alerts](#).

###

This information can be made available in alternative accessible formats upon request. For information about obtaining an alternative format, contact the KDOT Division of Communications, 700 SW Harrison St., 2nd Fl. West, Topeka, KS 66603-3745 or phone 785-296-3585 (Voice) / 7-1-1 (Hearing Impaired).

Click below to connect to KDOT's Social Networks:

