

## WORK COMPLETED IN 2023

The U.S. 69 Corridor Modernization and Expansion Project (69Express) has officially completed the first year of construction. Within the past year, the Project Team reached several remarkable milestones, keeping pace with the project timeline and schedule.

Along with the improvements at the 135th Street interchange, the contractor has completed over **1,000,000 square feet of new pavement** and **six new bridges** with even more scheduled to be completed over the winter.

1,000,000 square feet is like  
**28 football fields**  
of new pavement

The project is progressing  
**on schedule**

Construction of the new express lanes is scheduled to be complete by the end of  
**December 2025**

Approximately **25% of the overall bridge construction** has been completed.

Most notably, construction crews have successfully built six new bridges at I-435, Indian Creek, Blue Valley Parkway, 135th Street, 139th Street and 143rd Street. With the completion of these bridges, approximately 25% of the overall bridge construction has been completed.

In addition to bridge construction, new pavement has been added along U.S. 69 from 119th Street to 151st Street. Including the interchange improvements at 135th Street, the Project Team has laid over 1 million square feet of new pavement.

In 2023, the contractor worked primarily on the southbound lanes, bridges and overpasses on U.S. 69. As we enter into the second year of construction, work will shift to the northbound lanes of U.S. 69.

# CONSTRUCTION SCHEDULE FOR 2024/2025/2026



- **119th Street interchange** - A closure of 119th Street (including closure of left-turn movements to/from interchange ramps) will be utilized to accelerate the reconstruction of 119th Street, interchange ramps and the U.S. 69 bridges over 119th Street.
- **Blue Valley Parkway** - Reconfiguration of the interchange will continue in 2024. New ramp from southbound Blue Valley Parkway to southbound U.S. 69 will open in spring 2024.
- **135th Street** - In 2023, construction of the southbound U.S. 69 bridge was completed. In 2024, the northbound U.S. 69 bridge will be reconstructed. In 2025, additional turn lanes will also be added along 135th Street.
- **139th Street** - There will be a full closure of 139th Street for reconstruction and the completion of the new U.S. 69 northbound bridge over 139th Street. This closure will coincide with the full closure of 143rd Street.
- **143rd Street** - The southbound U.S. 69 bridges over 143rd Street were widened in 2023 to accommodate the improvements on U.S. 69. The northbound bridge widening will require closure of 143rd Street. This closure will coincide with the closure of 139th Street.



- 2025**
- **U.S. 69 and I-435 Interchange**
    - Replacing the U.S. 69 bridges over I-435.
    - Reconstruction and widening of U.S. 69.
  - **167th Street Improvements**
    - The 167th Street interchange will be reconstructed, including adding ramps to provide south-facing access to all directions of U.S. 69.
    - 167th Street will also be reconstructed, expanding the street to four lanes.
    - Roundabout intersections will be added at U.S. 69 to connect with Overland Park projects at Metcalf Avenue and Antioch Road.
- 2026**
- Completion of the 167th Street Interchange
  - Completion of noise wall construction
  - Sodding and seeding
  - Striping

## NOISE WALL CONSTRUCTION

Between 2024 and 2026, 11 noise walls will be installed between 151st Street and Indian Creek. Walls north of College Boulevard were installed with previous projects.

In February 2022, KDOT completed a National Environmental Policy Act (NEPA) Environmental Assessment (EA) which included a noise study. This noise study determined where noise walls were feasible and reasonable according to the KDOT and Federal Highway Administration criteria.

According to the Federal Highway Administration, a five decibel change is the level at which most people perceive a sound difference. The noise walls will reduce sound from the highway by at least five decibels for homes throughout the U.S. 69 corridor.

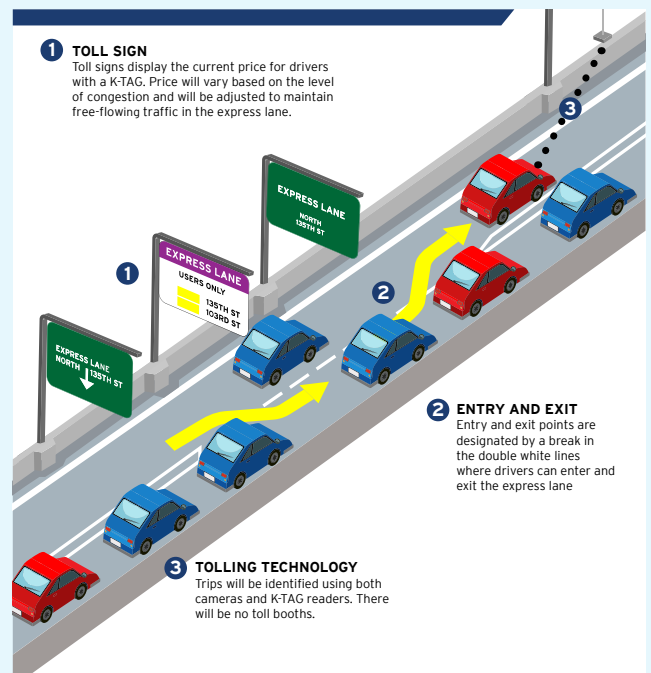


## HOW TOLLING WORKS

The northbound and southbound express lanes will create a new third lane in each direction and will be built on the inside of the existing lanes, where the median and green space exist today. Each express lane will be distinguished from the general purpose lanes with a buffer and a marked, wide double stripe. Northbound and southbound traffic will be separated by a concrete barrier. Trips will be identified using cameras and K-TAGs. The Kansas Turnpike Authority (KTA) will be supporting KDOT to process all toll transactions and billings. There will be no toll booths.

### Pricing

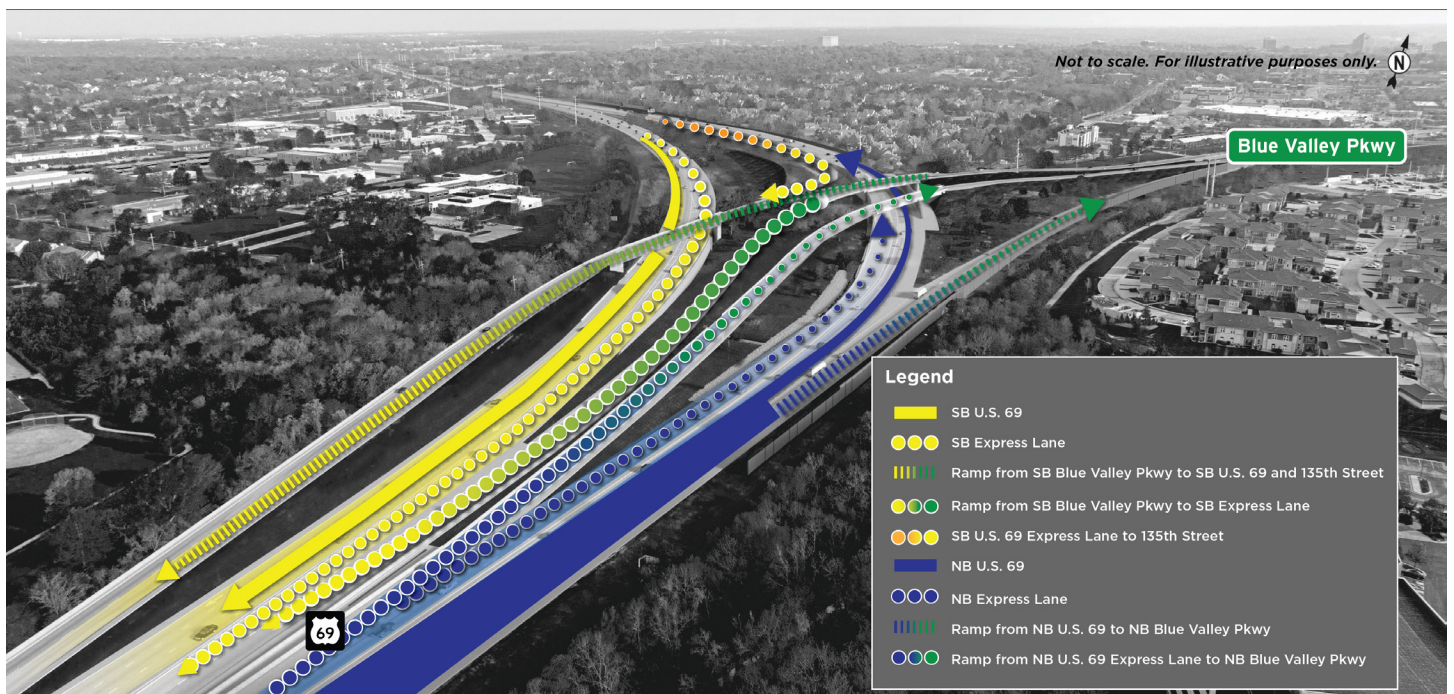
Tolls will be variable and will change according to the level of congestion on the roadway. Rates will vary based on the time of day and whether a user is driving the full length of the corridor (151st Street to 103rd Street) or just a portion. For example, someone driving northbound the entire length of the corridor during the morning rush hour could pay \$1.50. However, during off-peak times – mid-day, nights and weekends – the rates are projected to drop significantly because there is less traffic on the highway. The rates are expected to drop to \$0.30 for a partial trip or \$0.65 for a full trip.



## BLUE VALLEY PARKWAY INTERCHANGE

The graphic below shows the new configuration that is being constructed at the U.S. 69 and Blue Valley Parkway interchange. New flyover ramps will take travelers to and from Blue Valley Parkway and connect to the new express lanes in both directions.

The proposed configuration is an improvement over the existing interchange as it provides lane continuity on southbound U.S. 69, replaces the non-traditional left-hand entrance with a traditional right-hand entrance to southbound U.S. 69 from Blue Valley Parkway and adds a continuous auxiliary lane from 119th Street to 135th Street along southbound U.S. 69.



## STAY CONNECTED

Want to stay informed on the latest project information? Please scan the QR code to sign up for our newsletter. For more information, please visit the project website at [www.69Express.org](http://www.69Express.org) or send an email to [info@69Express.org](mailto:info@69Express.org) and we will respond to you as soon as possible.

