



THANK YOU FOR JOINING US!

PUBLIC MEETING #1

January 20, 2021

4:30 - 6:30 p.m.

** The presentation will begin at approximately 4:35*

THANK YOU FOR ATTENDING—VIRTUAL MEETING OVERVIEW

- The Project Team will provide a presentation that will last about 30 minutes.
- After the presentation, we will open the virtual podium to questions. If you have questions, you may type in your question and a member of the project team will respond verbally.
 - You will see a prompt to type in question at the virtual podium.
 - Your question will be reviewed by the project team, read aloud and shown on the screen.
 - If you are a call-in user and have a question hit *3 to raise your hand
- If you have comments you can leave them through the comment form as part of the meeting.

WELCOME AND OPENING REMARKS

Lindsey Douglas

Deputy Secretary

Kansas Department of Transportation

MEETING OVERVIEW

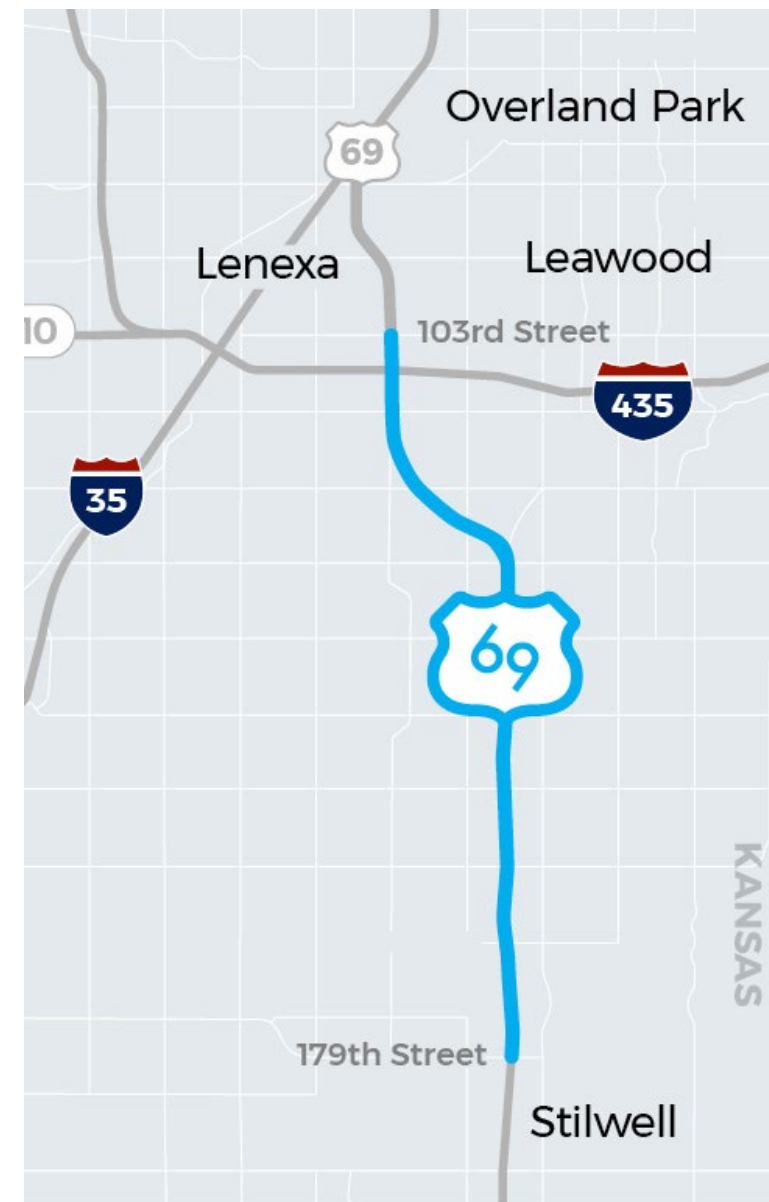
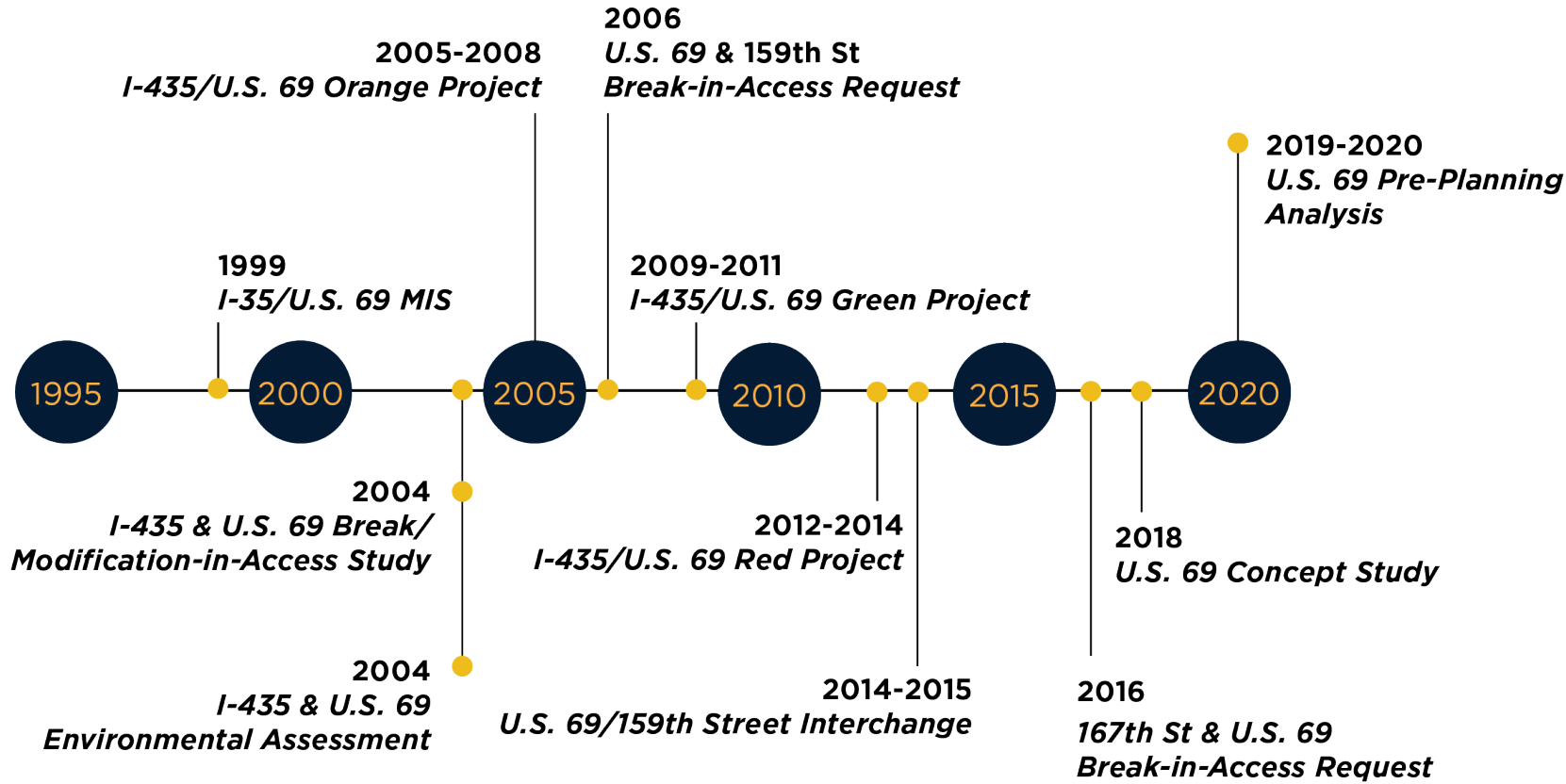
- Project Overview
- Express Toll Lanes
- Environmental Process and Purpose and Need
- What We've Heard So Far
- Next Steps
- Close and Opportunity for Comments

PROJECT OVERVIEW AND EXPRESS TOLL LANES

Cameron McGown

HNTB Project Manager

PROJECT LOCATION/ PREVIOUS STUDIES



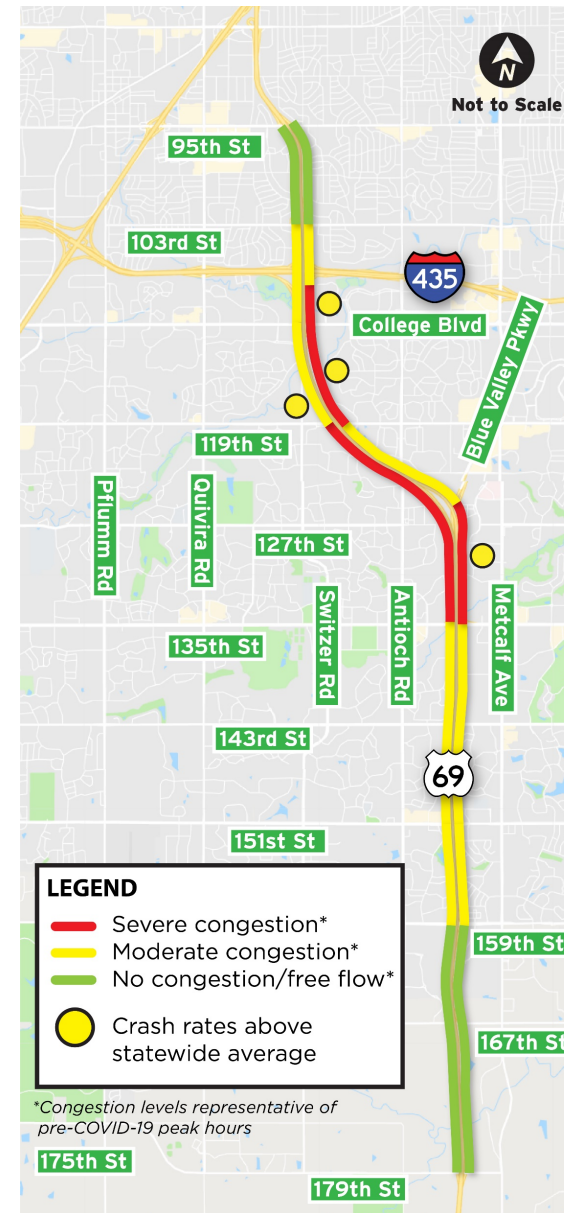
U.S. 69 CONCEPT STUDY

Examined

- What are the issues and how do we expect them to change over time?
- What could potential improvements look like and what are their costs?
- How should improvements be prioritized?

What did we learn?

- Extensive congestion north of 159th St
- Crash rates 53% above the statewide average
- Existing pavement and bridges are aging
- Peak travel times expected to triple by 2040



Free
Flow



2017
Peak Periods



2040
Peak Periods



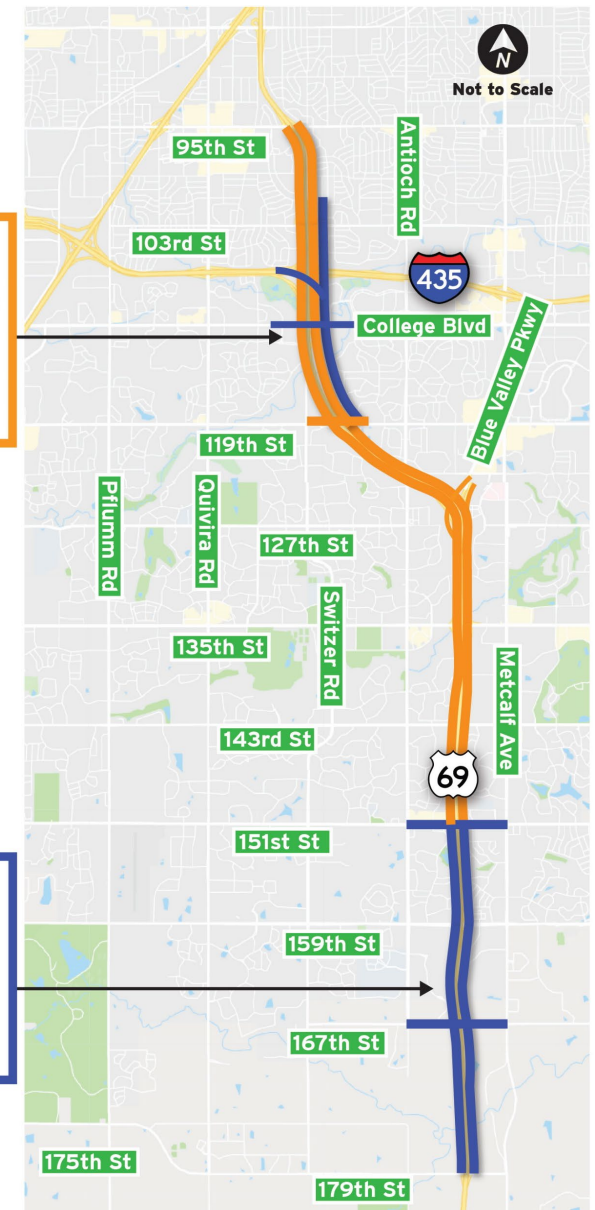
U.S. 69 CONCEPT STUDY

What did we learn?

- Traffic is expected to grow significantly in response to anticipated growth in population and employment in the region served by U.S. 69.
- Improvements should be phased over time.
- Near-term improvements should address the worst traffic and safety locations, which are north of 151st Street.

Improvements shown in orange illustrate the scope of work that could be included in the initial construction project addressing the majority of the existing traffic and safety issues in the corridor.

Improvements shown in blue illustrate the scope of work that would complete the improvements in the corridor needed to address the traffic and safety issues through 2050.



NEW TOLLING LEGISLATION

KSA 68-20, 120

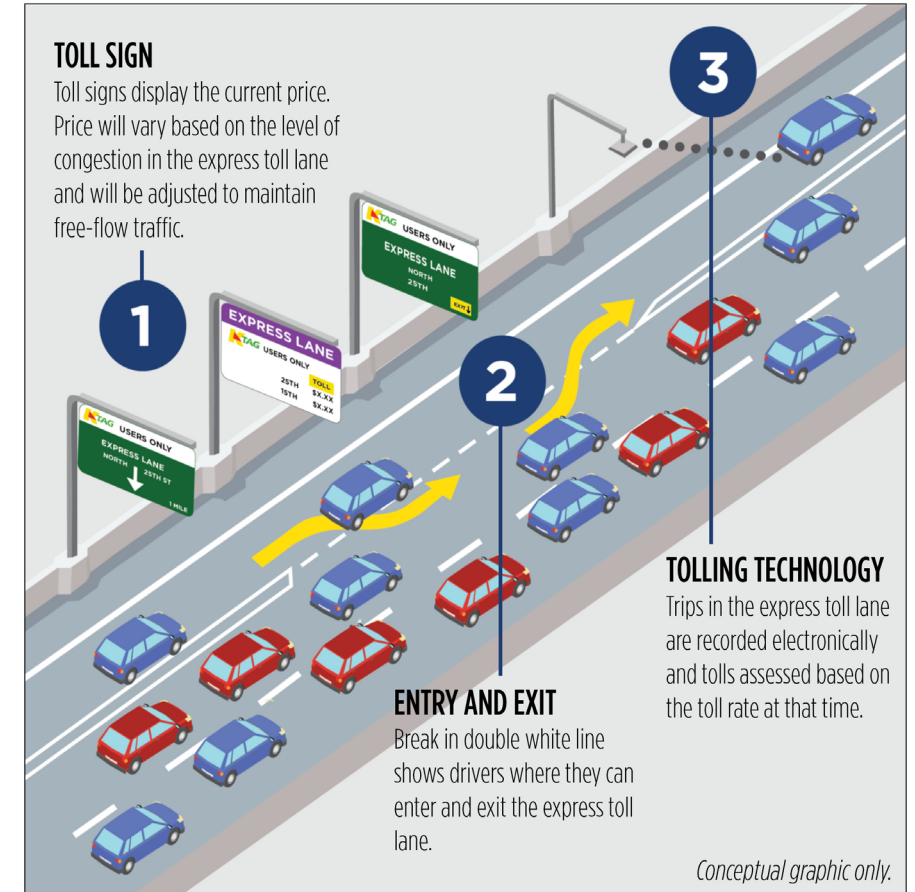
- Grants new authority to KDOT to develop toll projects
- Highlights
 - No existing lane of any state highway can be tolled
 - Tolls shall be charged on all users of the toll facility regardless of class, size, or kind of traffic
 - Must include at least 1 public meeting
 - All toll revenue must remain with that roadway
- Toll Project Approval Process

If results and support are positive:

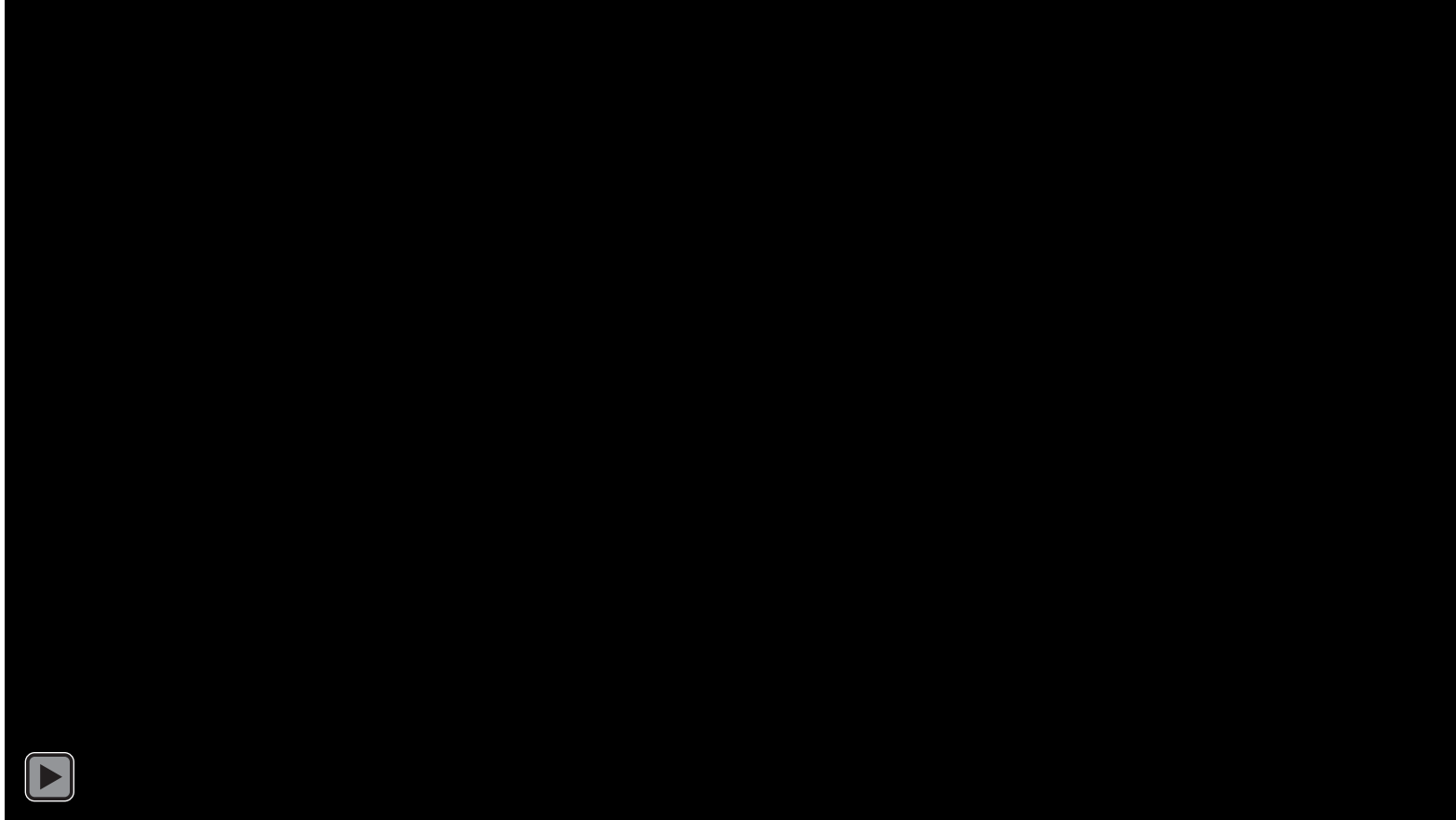
 - A community/KDOT proposal is presented to the KTA Board
 - If approved by the KTA Board, proposal goes to the State Finance Council (SFC) for consideration
 - If SFC approves, project moves on as a state priority

U.S. 69 PRE-PLANNING ANALYSIS

- 2019-2020
- Basic express lanes concept
- High-level estimates of revenue potential
- Cost estimates
- Request for more detailed study



EXPRESS TOLL LANE CONCEPT



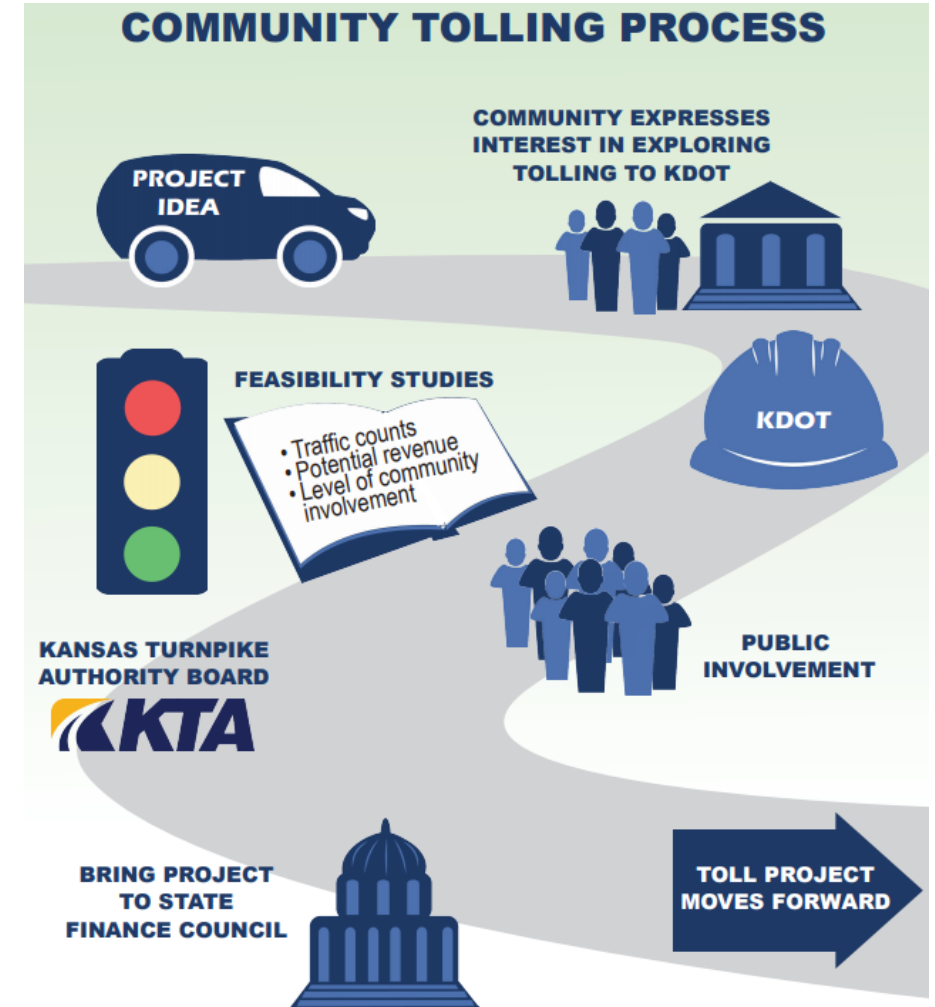
WHY EXPRESS LANES?

- A better way to address congestion
 - Reliable, more predictable travel times for the long-term
 - Provides users a choice in how they use US 69
 - More sustainable approach to adding lanes
 - Benefits both express lanes and the existing free lanes
- A tool for funding
 - A user fee to generate funds for Overland Park's local contribution
 - Tolls are only paid by those that choose to use the express lanes
 - Advance the schedule

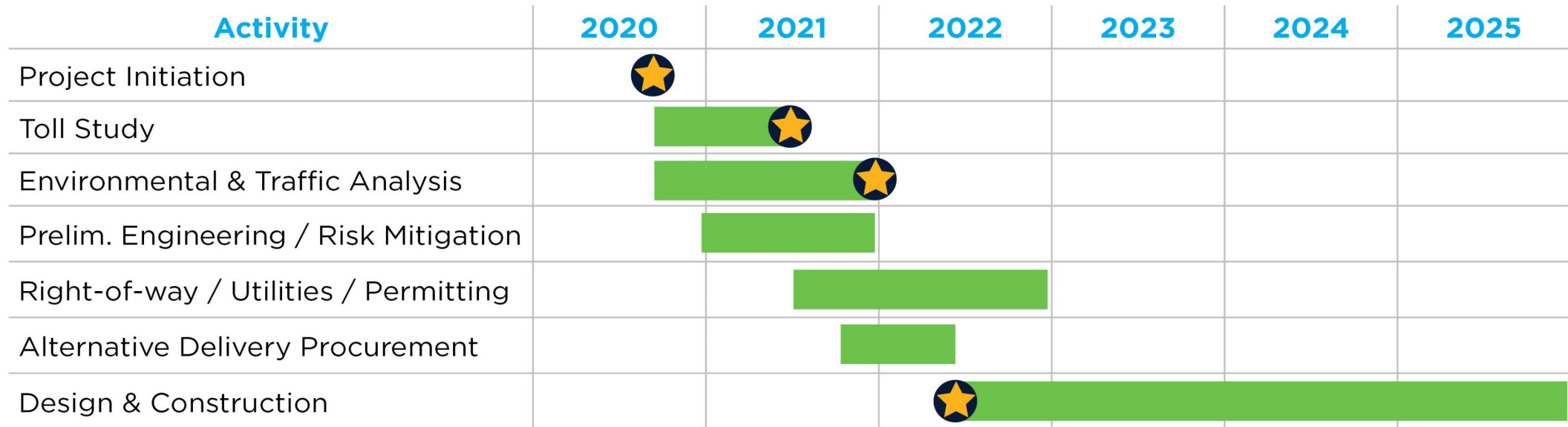


MOVING FORWARD

- More-detailed technical analysis
 - Modifications to concepts
 - Traffic and Revenue analysis
 - Operational framework
 - Environmental analysis
- Robust community engagement
 - Project Advisory Group
 - Public Meetings/Community presentations
 - Electronic and Traditional Media Outreach
- Community request
- Proposals to KTA and State Finance Council
- Potential transition from development pipeline to construction pipeline



POTENTIAL PROJECT SCHEDULE

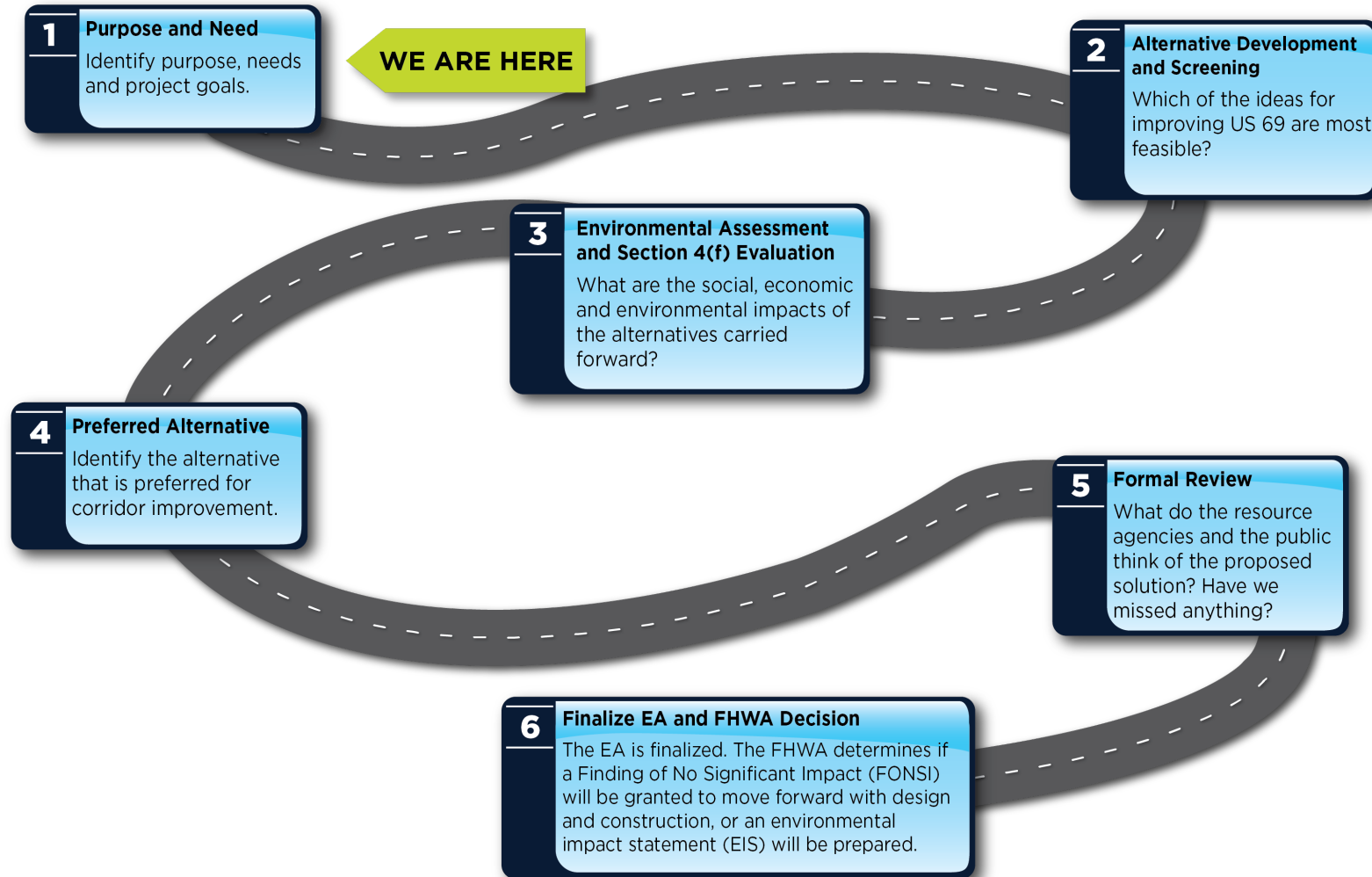


ENVIRONMENTAL PROCESS AND PURPOSE AND NEED

Gretchen Ivy

HNTB NEPA Task Lead

ENVIRONMENTAL ASSESSMENT (EA)



PURPOSE AND NEED

- **Improve safety** to address crash frequency and severity within the corridor;
- **Reduce congestion** and improve traffic operations to meet existing and future travel demands;
- **Promote sustainability** by addressing infrastructure condition and ongoing operations and maintenance needs, supporting environmental stewardship, as well as improving long-term traveler reliability;
- **Provide flexible choices** by promoting a transportation system that accommodates the needs for all users and modes; and
- **Support local and regional growth** through coordinated transportation improvements consistent with planned and proposed community land use.



ENGAGEMENT PROCESS AND WHAT WE'VE HEARD

Michael DeMent

HNTB Engagement Specialist

ENGAGEMENT CAMPAIGN



- Advisory Group



- Stakeholder Briefings



- Community Presentations



- Public Information Meetings



- Focus Groups



- Surveys



- Project Website



- Social Media



- Media Relations



- Visualizations/Simulations



- Electronic Newsletters

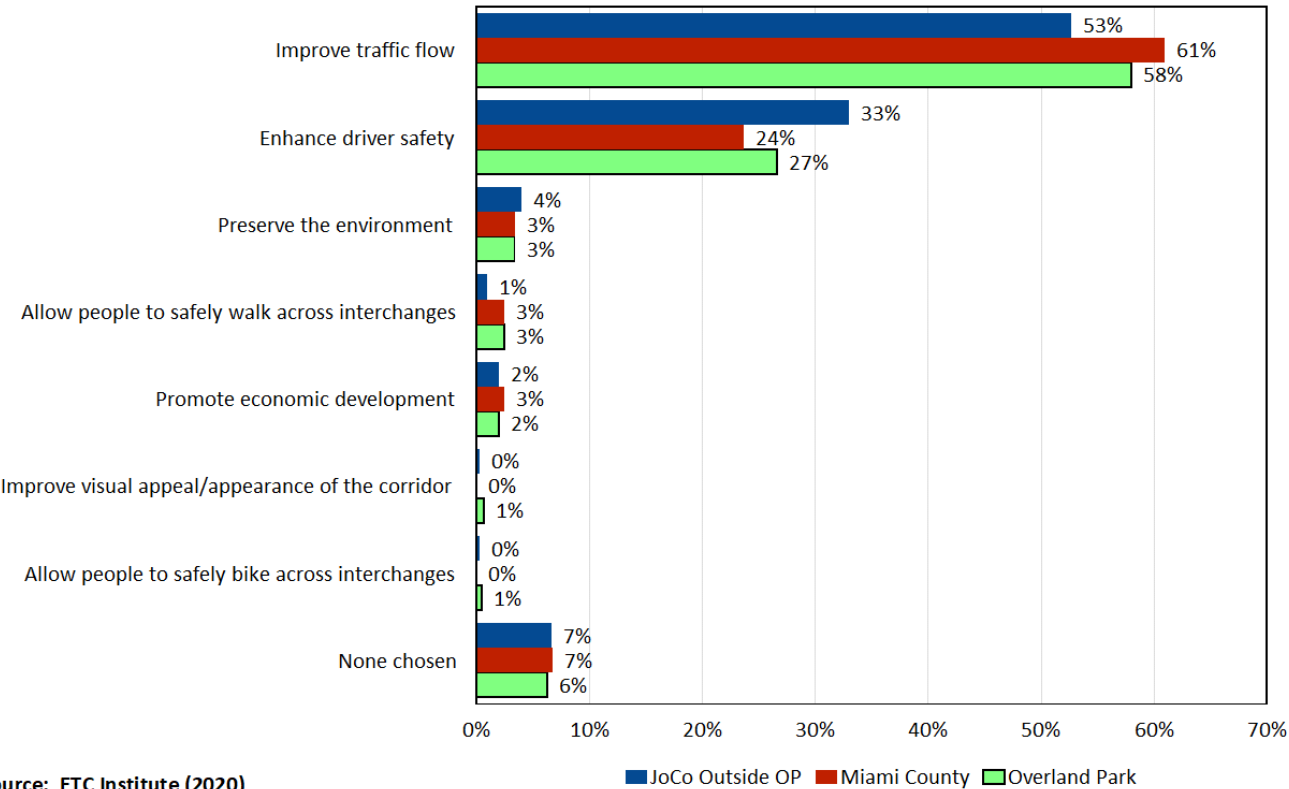
KEY TAKEAWAYS FROM ELECTED/ CIVIC INTERVIEWS

1. The need is undeniable – and the sooner it's met, the better.
2. Quality of life is the most important; Safety is a close second.
3. COVID-19 hasn't diminished the need for expansion.
4. Express toll lanes are generally supported.
5. Communicate early, often and everywhere.

SURVEY RESULTS IMPROVING TRAFFIC FLOW

Q15. Of the issues listed in Question 14, which do you think should be most important in determining the types of improvements (if any) that are made to US 69 between 103rd and 179th Streets?

by percentage of respondents who selected the items as their TOP choice



Source: ETC Institute (2020)

Improving traffic flow is the #1 issue for residents

NEXT STEPS



- **Next Public Meeting in April**
- **Project Website available with additional information as it becomes available**
- **Community Group presentations available upon request**
- **Presentations to City Council**

THANK YOU FOR ATTENDING - QUESTIONS

- Thanks for coming! We will move to the question-and-answer portion of the meeting.
- If you have questions:
 - You will see a prompt to type in question at the virtual podium.
 - The project team will review the question and will respond verbally.
 - If you are a call-in user press *3 to raise your hand and we will call on you.
- The project team will take a quick break as you type in your questions and we will begin responding in about 3 minutes.

THANK YOU!

Visit us at www.69express.org